

✓ COLORBOND® STEEL FENCING COLOURS

These charts are meant as an indicative guide only as each computer and/or printer can display the colours slightly differently

STANDARD COLOUR RANGE - IN STOCK

SURFMIST® SM <i>Frost Off White</i>	DOMAIN® DO <i>Classic Cream Primrose</i>	PAPERBARK® PA <i>Terrace Merino</i>	EVENING HAZE® EH <i>Summershade Mossvale Sands</i>
SHALE GREY® SG <i>Snow Gum Gull Grey</i>	DUNE® DU <i>Seedpod Grey Birch</i>	RIVERSAND® RI	PALE EUCALYPT® PE <i>Meadow Mist Green</i>
WILDERNESS® WN <i>Willow Rivergum Green</i>	JASPER® JA <i>Plateau</i>	BASALT® BA	IRONSTONE® IR <i>Dark Ash</i>
WOODLAND GREY® WG <i>Grey Ridge Slate Grey</i>	MONUMENT® MO <i>Shadow</i>		

EXTENDED COLOUR RANGE - IN STOCK

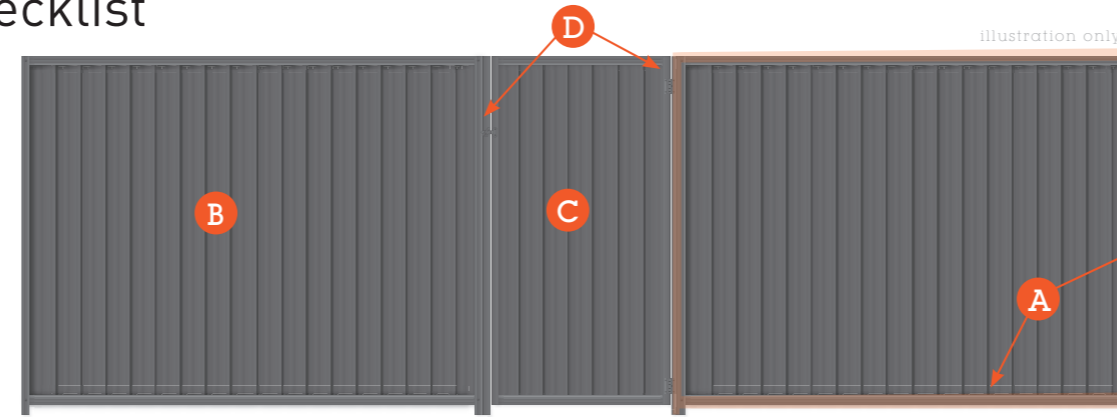
WALLABY® WA	WINDSPRAY® WS <i>Haze Armour Grey</i>	DEEP OCEAN® DE <i>Bluestone Mountain Blue</i>	MANOR RED® MR <i>Red Oak Heritage Red</i>
BUSHLAND® BU <i>Tea Tree</i>	COTTAGE GREEN® CG <i>Evergreen Caulfield Green</i>	HARVEST® HA <i>Wheat</i>	NIGHT SKY® BL <i>Eclipse Black</i> <small>Posts & Rails Only</small>

07 5596 4999

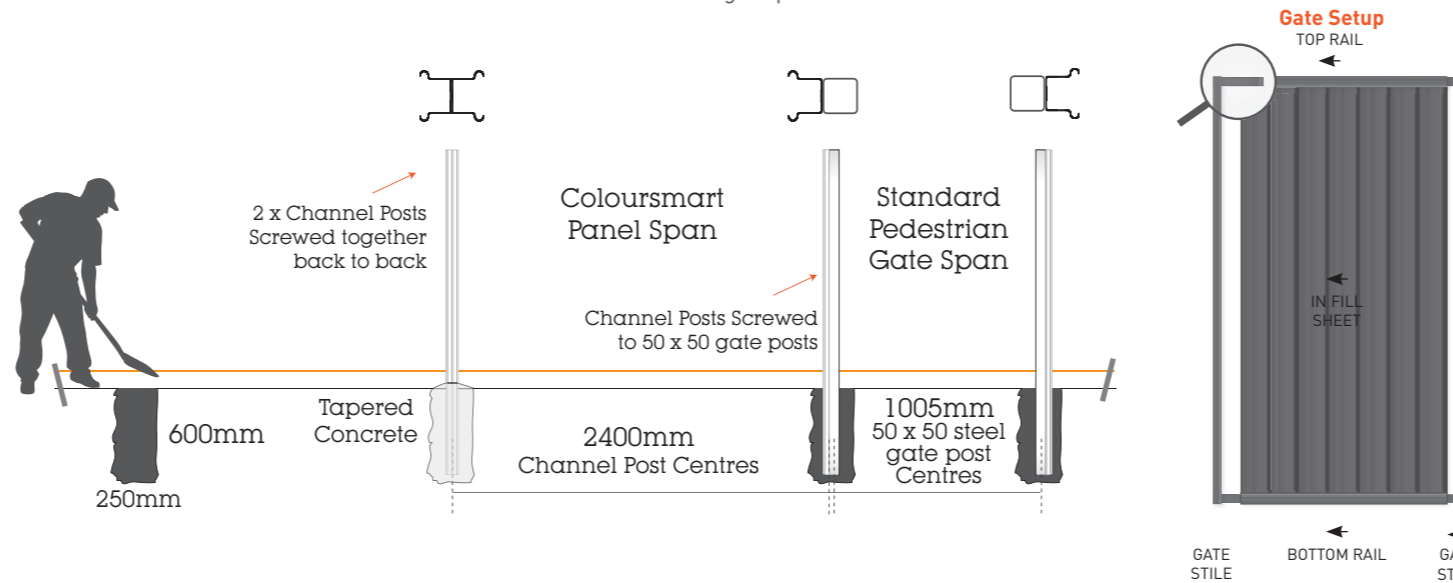
✓ D.I.Y. GUIDE

Materials Checklist

- A** Panel Frame Posts & Rails
- B** Panel Sheet
- C** Gate
- D** Gate Kit



- 1 Site Plan & Ordering**
 - Decide on fence position and measurements of panels & posts by creating a mud map of your site.
 - Following the above Materials Checklist, calculate how many of each component you require
 - Contact any one of our stores to complete your order. Most items are available in stock
- 2 String Line & Post Holes**
 - Set Stringline along the desired line of the fence
 - Measure out all holes, starting with the gate post holes
 - Dig post holes along stringline 600mm deep x 250mm in diameter
 - Posts will sit approximately 500mm into the post holes
- 3 Install Posts**
 - Ensure post centres are accurate - see below diagram
 - Screw posts back to back, place them in post holes and concrete them in, ensuring they are level and flush along the stringline
 - 50 x 50 steel posts should be used for gates and corners
 - Channel posts can be screwed on to these corner/gate posts
- 4 In Fill Sheets**
 - Insert the bottom rail into the post channels and screw through each side of the post channel to secure it along the bottom level of your fenceline
 - Place sheets into the channel posts and bottom rail ensuring they overlap evenly and lock in to place
 - Place the top rail over the top of sheets and screw through each side of the channel post to secure
- 5 Install Gate(s)**
 - Gates assembly: See below diagram
 - Attach hinge & latch components of the Gate Kit to Gate as per instructions
 - Attach hinge & latch components of the Gate Kit to the 50 x 50 Steel Gate Posts as per instructions



Care Instructions & Warranty:

Exposure to UV Light, pollution, salt deposits and chemicals can affect the long term performance of the fencing coating if not removed with regular washing.

A gentle monthly clean with a soft brush, warm water and mild detergent followed by a rinse of fresh water will maintain the finish of both powdercoated, Colorbond and stainless steel fencing components and fulfill warranty conditions.

For Warranty details visit www.bluescopesteel.com.au/warranties.



Disclaimer: Drawings not to scale. While all care is taken in the production of this DIY (do it yourself) guide it is provided as an indicative installation guide only. The Fence Depot is not liable or responsible for the outcome of any fence installed using this guide. © Copyright 2016 Oxworks Pty Ltd. All rights are reserved in relation to this matter.

FENCEDEPOT.COM.AU



Shed 2, 32 LAWRENCE DRIVE, NERANG, QLD | (07) 5596 4999 | fencedepot.com.au

WHY COLOURSMART COLORBOND FENCING?

ColourSmart Colorbond® Steel Fencing's clever design makes it easy to install and adds functionality and modern style to any home. You can relax, entertain and showcase your outdoor living areas with a huge range of colours and unique fencing solutions.

Colorbond®

Colorbond® Steel Privacy Fencing is rolled using only genuine BlueScope COLORBOND® Steel.



Our ColourSmart Colorbond® Steel Privacy Fencing comes with a **10 Year Warranty**, backed by BlueScope Steel.

22 MODERN COLOURS

We carry the **full range** of Colorbond® Steel Fencing Colours with **8 exciting new colours** available in stock for same day pick up.

Built To Last

ColourSmart Colorbond® Steel Fencing won't warp, twist, rot or split like timber fencing

Huge Range - In Stock

We stock a **full range** of ColourSmart Panels, Gates, Posts and Accessories

Australian Made

Our Colorbond® Steel Fencing is made in Australia, **to Australian Standards** for our conditions



Suitable Usage

- Boundary Fencing
- Side-of-House Security
- Creates great privacy
- Pool Fencing

ColourSmart can be used as pool fencing but MUST be installed in conjunction with pool regulations to comply with Australian Standard AS1926.1

- Bin Enclosures
- Lockable Storage



Tools Required

- Tape Measure
- Stringline
- Shovel/Post Hole Shovel
- Cordless Battery Drill
- Hex Head Drill Bit (5/16)
- Spirit Level
- Tin Snips or Nibbler
- Used to trim down in-fill sheets
- Concrete Mix



Handy Hints

- Contact your local Government Authority before deciding on your fencing requirements
- Check for all underground services! Simply Dial **1100** to find out more.
- Allow at least 24 hours to ensure your posts are fully set in concrete before installing In Fill sheets & gates
- Posts and panels can be easily cut down to fit non standard spacings
- Remove all metal filings & concrete splatter after installation to avoid damaging your new fence



Panel Details

PANEL WIDTHS:
2400mm; 3180mm

GATE WIDTHS:
930mm; 1720mm

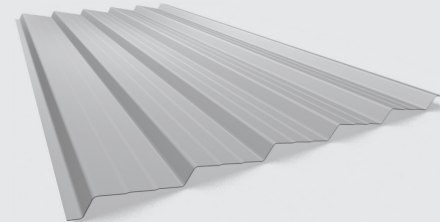
PANEL & GATE HEIGHTS:
1200mm; 1500mm; 1800mm; 2100mm



ColourSmart In Fill Sheet Profiles

Sawtooth Profile

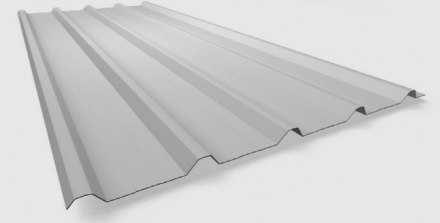
0.35M BMT
Base Metal Thickness



Our unique Sawtooth/Zigzag Profile ensures your fence looks great from both sides.

Trimline Profile

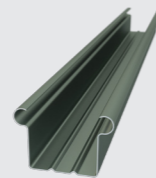
0.35M BMT
Base Metal Thickness



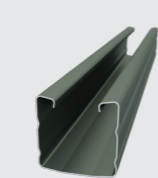
We are now rolling the traditional Trimline Colorbond® Steel Fencing profile.



Universal Posts & Rails



POST PROFILE
0.8MM BMT
(Base Metal Thickness)

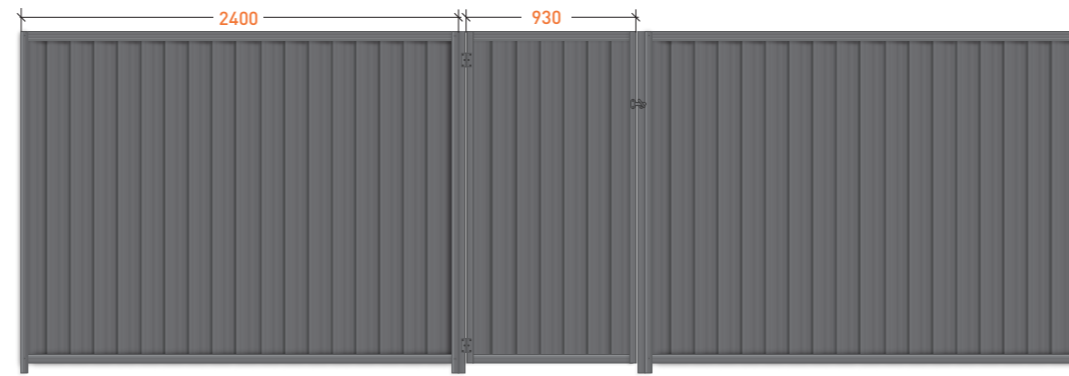


RAIL PROFILE
0.8MM BMT
(Base Metal Thickness)

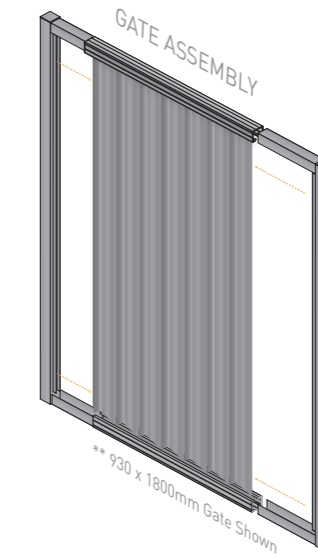
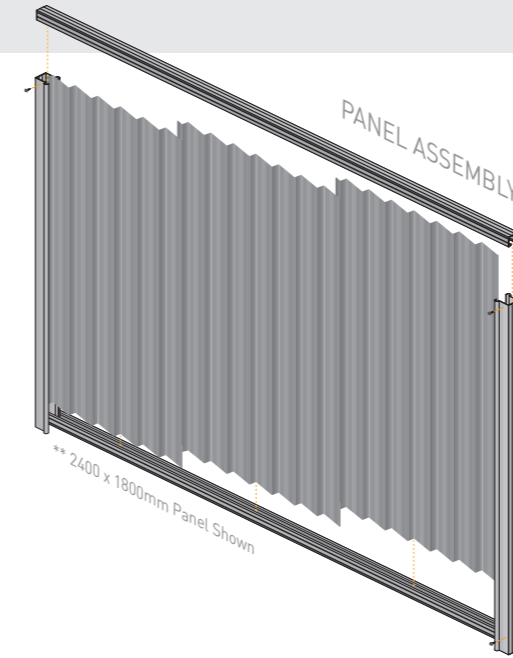
Our unique post and rail system is designed to work seamlessly with all of our sheet profiles, ensuring a hassle free install experience.

COLORBOND® STEEL FENCING STYLES

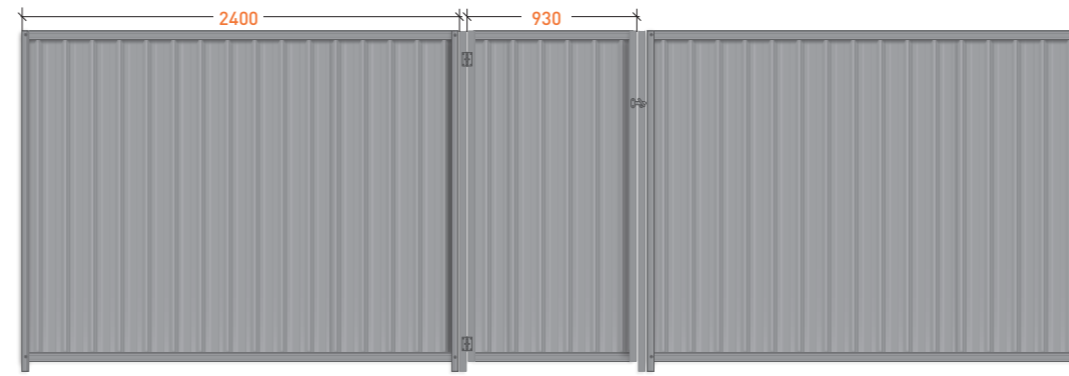
COLOURSMART SAWTOOTH PANEL & GATE COMPONENTS



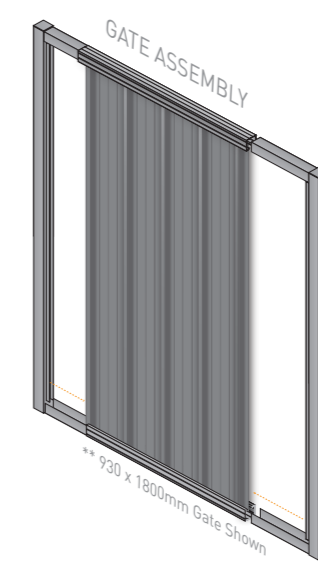
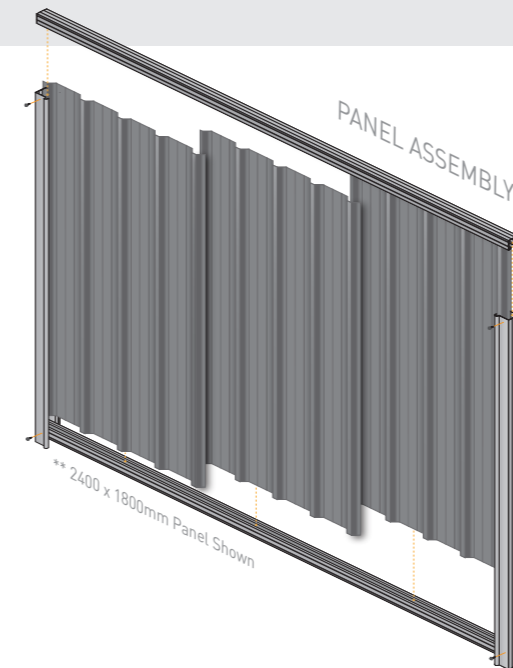
2400MM PANEL:	3180MM PANEL:	930MM GATE:	1720MM GATE:
3 x Sawtooth Infill Sheets 2 x C/Smart Posts 2 x C/Smart Rails @ 2400mm 16 x 10-16*16 Tek Screws	4 x Sawtooth Infill Sheets 2 x C/Smart Posts 2 x C/Smart Rails @ 3180mm 16 x 10-16*16 Tek Screws	1 x Sawtooth Infill Sheets 2 x C/Smart Gate Stiles 2 x C/Smart Rails @ 830mm 12 x 10-16*16 Tek Screws	2 x Sawtooth Infill Sheets 2 x C/Smart Gate Stiles 2 x C/Smart Rails @ 830mm 16 x 10-16*16 Tek Screws



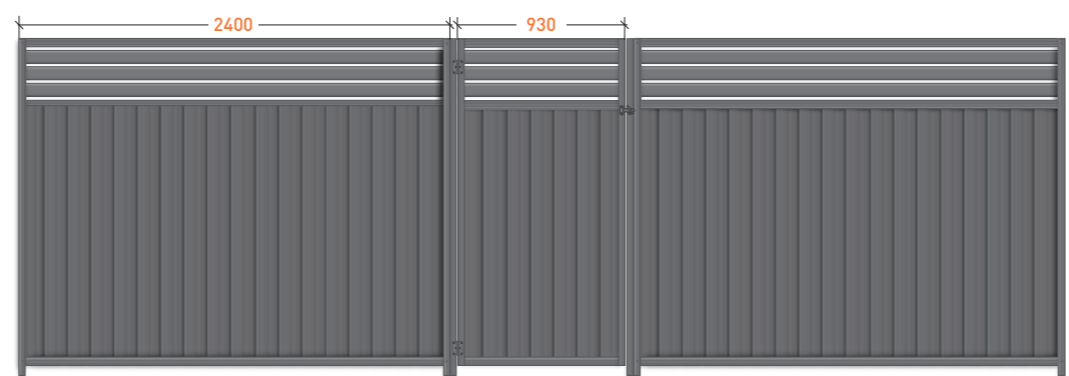
COLOURSMART TRIMLINE PANEL & GATE COMPONENTS



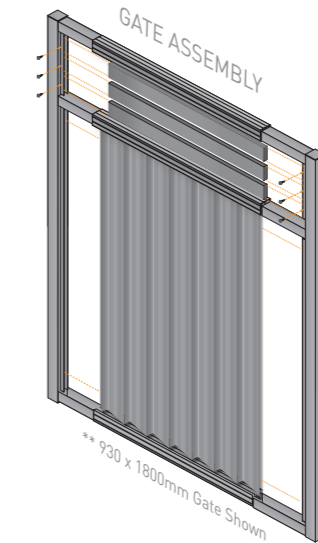
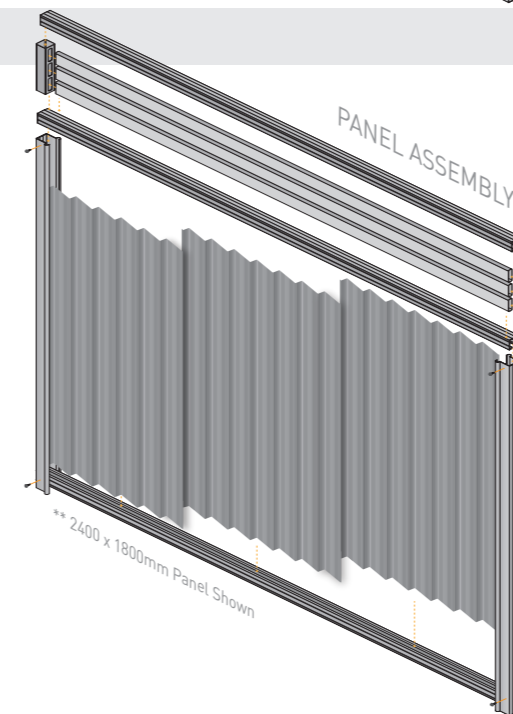
2400MM PANEL:	3180MM PANEL:	930MM GATE:	1720MM GATE:
3 x Trimline Infill Sheets 2 x C/Smart Posts 2 x C/Smart Rails @ 2400mm 16 x 10-16*16 Tek Screws	4 x Trimline Infill Sheets 2 x C/Smart Posts 2 x C/Smart Rails @ 3180mm 16 x 10-16*16 Tek Screws	1 x Trimline Infill Sheets 2 x C/Smart Gate Stiles 2 x C/Smart Rails @ 830mm 12 x 10-16*16 Tek Screws	2 x Trimline Infill Sheets 2 x C/Smart Gate Stiles 2 x C/Smart Rails @ 830mm 16 x 10-16*16 Tek Screws



COLOURSMART BREEZEWAY PANEL & GATE COMPONENTS



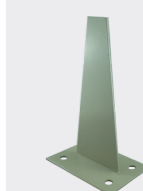
2400MM PANEL:	3180MM PANEL:	930MM GATE:	1720MM GATE:
3 x ZigZag Infill Sheets 2 x C/Smart Posts 3 x C/Smart Rails @ 2400mm 3 x 65x16mm Slats @ 2400mm 2 x Slotted Breezeway Posts 16 x 10-16*16 Tek Screws	4 x ZigZag Infill Sheets 2 x C/Smart Posts 3 x C/Smart Rails @ 3180mm 3 x 65x16mm Slats @ 3600mm 2 x Slotted Breezeway Posts 16 x 10-16*16 Tek Screws	1 x ZigZag Infill Sheets 2 x Breezeway Gate Stiles 3 x C/Smart Rails @ 830mm 3 x 65x16mm Slats @ 820mm 12 x 10-16*16 Tek Screws	2 x ZigZag Infill Sheets 2 x Breezeway Gate Stiles 3 x C/Smart Rails @ 830mm 3 x 65x16mm Slats @ 1610mm 16 x 10-16*16 Tek Screws



Code	ColourSmart Fencing Components	
CS1200**	ColourSmart Sawtooth Infill Sheet	1190mm
CS1500**	ColourSmart Sawtooth Infill Sheet	1490mm
CS1800**	ColourSmart Sawtooth Infill Sheet	1790mm
CS2100**	ColourSmart Sawtooth Infill Sheet	2090mm
CS1250**	ColourSmart Trimline Infill Sheet	1190mm
CS1550**	ColourSmart Trimline Infill Sheet	1490mm
CS1850**	ColourSmart Trimline Infill Sheet	1790mm
CS2150**	ColourSmart Trimline Infill Sheet	2090mm
CS3000**	ColourSmart Channel Post	1800mm
CS3100**	ColourSmart Channel Post	2100mm
CS3200**	ColourSmart Channel Post	2400mm
CS2700**	ColourSmart Channel Post	2700mm
CS3300**	ColourSmart Channel Post	3000mm
CS4000**	ColourSmart Rail (suits 2400mm Panels)	2400mm
CS4100**	ColourSmart Rail (suits 3180mm Panels)	3180mm
CS4200**	ColourSmart Rail (suits 930mm Gates)	830mm
CS4300**	ColourSmart Rail (suits 1720mm Panels)	1620mm
CS6200**	ColourSmart Gate Stile	1200mm
CS6500**	ColourSmart Gate Stile	1500mm
CS6800**	ColourSmart Gate Stile	1800mm
CS7200**	ColourSmart Gate Stile	2100mm

Code	ColourSmart Breezeway Fencing Components	
VS1140**	3 of 65x16mm Slats (suit Breezeway 2400 Panel)	2400mm
VS1150**	3 of 65x16mm Slats (suit Breezeway 3180 Panel)	3600mm
VS1120**	3 of 65x16mm Slats (suit Breezeway 930 Gate)	820mm
VS1130**	3 of 65x16mm Slats (suit Breezeway 1720 Gate)	1610mm
VS1110**	Pre-Slotted Breezeway Post - 14mm spacings	50x250mm
CS6250**	Breezeway Gate Stile	1200mm
CS6550**	Breezeway Gate Stile	1500mm
CS6850**	Breezeway Gate Stile	1800mm
CS7250**	Breezeway Gate Stile	2100mm

Code	Posts & Accessories	
SP5024**	Steel Post	50 x 2400mm
SP5030**	Steel Post	50 x 3000mm
HW5355	Plastic Post Cap	50 x 50mm
HW5060**	Galvabond Cap	50 x 50mm
SP6524**	Steel Post	65 x 2400mm
SP6530**	Steel Post	65 x 3000mm
HW5600**	Steel Post Cap	65 x 65mm
HW5340	Plastic Post Cap	65 x 65mm
HW9901	Single Gate Kit - 1 x D-Latch & Ext Arm; 1 x Butt Hinge Pair	
HW9907	Double Gate Kit - 1 x D-Latch & Ext Arm; 2 x Butt Hinge Pair; 1 x 300mm Drop Bolt (all Zinc Galvanised)	
CS9810	Sharkfin Base Plate - Galvanised	120 x 100mm
CS9810**	Sharkfin Base Plate - Coloured	120 x 100mm
CS8100**	ColourSmart Steel Sleeper (WA Only)	2395mm
HW5000**	Self Tapping Tek Screw - Coloured	10-16*16
CS8000**	ColourSmart Coloured Plastic Post Cap*	



CS9810**
Sharkfin Base Plate



CS8000**
ColourSmart Coloured Plastic Post Cap